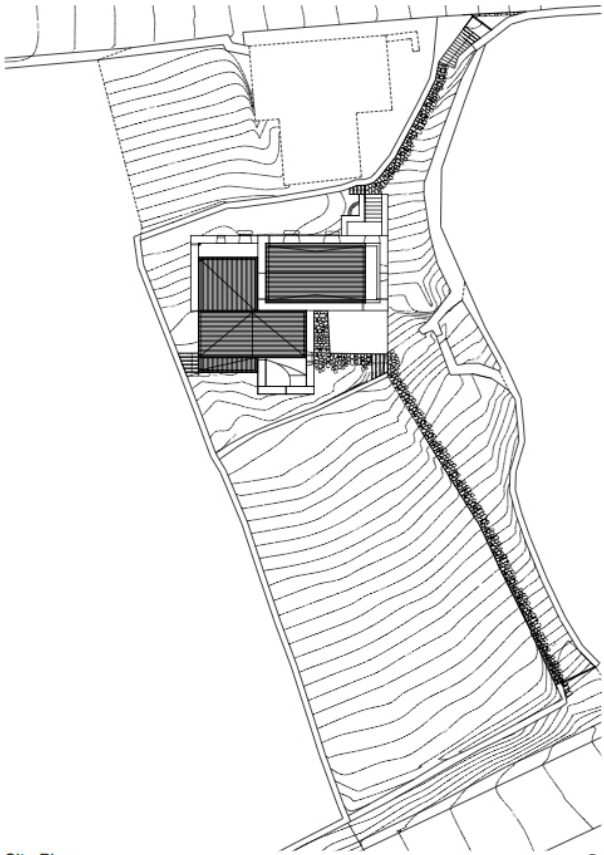




View from the South - 2014

E/C HOUSE São Roque . Pico Island . Azores . Portugal
SAMI-arquitectos . Inês Vieira da Silva . Miguel Vieira
Categoria A



Site Plan

Gross Area
 214,00m2
 Dates
 Project 2005-2007
 Completion 2010-2014

The ruin was a rural house made of basalt stone dating from the XVIII century. It's typology is the most common in the island of Pico with the house in the first floor and storage for cereals and animals in the ground floor. Each rural house used to have land for cultivation. We wanted to keep the site as close as it was in order to guarantee it's sustainability so the land is still being cultivated.

The project came from the will to maintain a ruin and thinking of a house that would value it, a house that could be modelled to it and take advantage at the same time, offering the most diverse and complex possibilities of living than the former typology.

The old house was small and had few and very little windows and the balcony was the only exterior space allowing contemplation.

We wanted that the new interior and exterior spaces could create an intense relation with the landscape, allowing more views between the interior and the exterior of the house and more natural light in it's interiors.

In a way we kept the same typology of the old house leaving the social areas in the upper floor, with beautiful views towards the exterior, placing bedrooms in the ground floor where the views are all towards the interior of the plot, towards a more intimate landscape.

The new house was modelled inside the walls of stone and designed with generous openings, for light to come inside and to contemplation of the landscape. These openings are sometimes lined up, and sometimes not, with the former openings of the ruin, creating new frames and relations with the original limits of the house.

Since the building is approached at the level of the covering, because of the slope of the land, we designed all the covering of the project as if they were decks, allowing to be used as sitting places or for contemplation.

Concrete and stone can old with the same quality and serenity. Both materials can age very similar, absorbing the hard climate conditions and transforming it into beautiful textures. We wanted concrete and stone to become almost the same element so that this house could still belong to that landscape.

The project is a movement between a limit line, in stone and concrete, and the volumes that are led by that same line, but sometimes flow independently or extend, whenever the necessity of space, light or of a view is needed.



View towards interior of the ruin - 2005



View towards the ruin - 2005